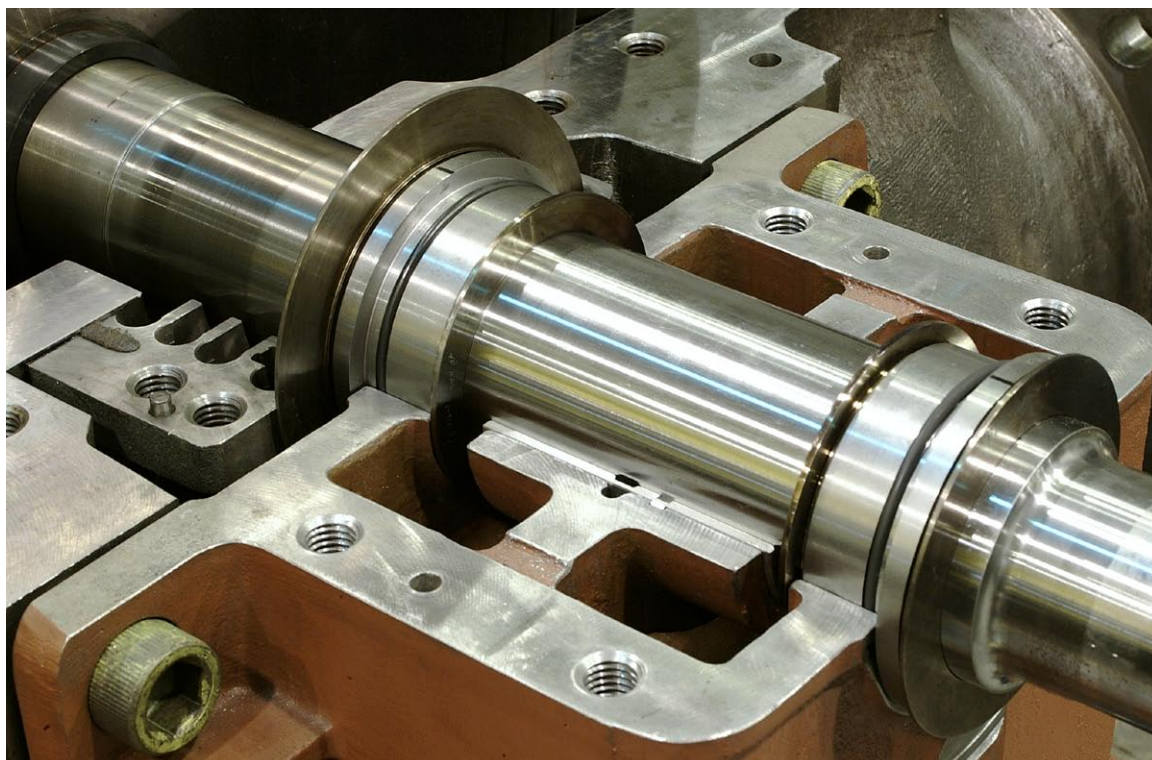


## ***Elliott Bearing Isolator (EBI)***



### **Benefits**

- Longer bearing life due to reduced oil contamination
- Elimination of oil leaks
- No wearing parts
- Installed and tested by Elliott to assure trouble-free operation
- Designed for steam turbine applications by a steam turbine manufacturer based on years of experience with other commercially available seals and consideration given to:
  - Turbine growth due to high temperature steam
  - Turbine materials
  - Turbine bearing options (ring-oiled and pressure lubricated)
  - Turbine speed
- Available and warranted for the YR product mix for new apparatus and for retrofits

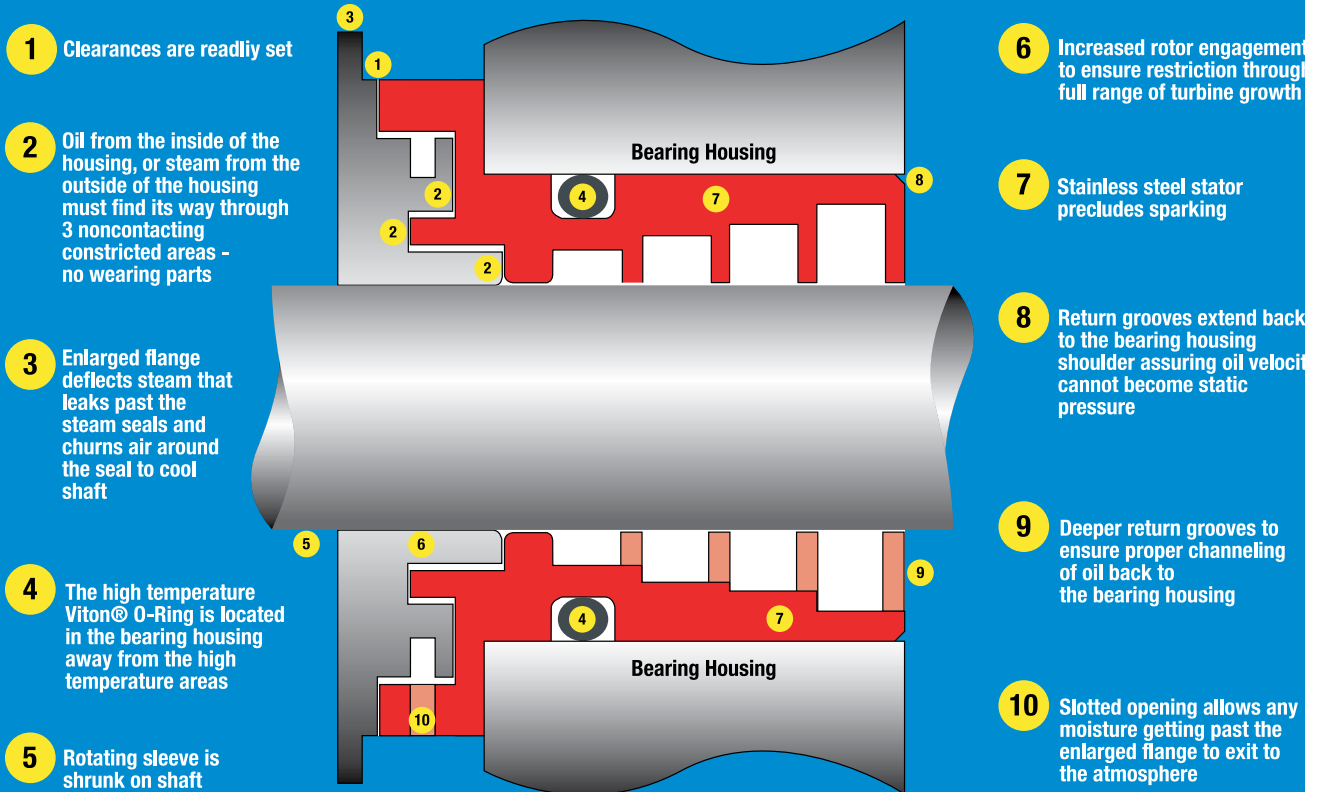


The world turns to Elliott

**TURBINES**

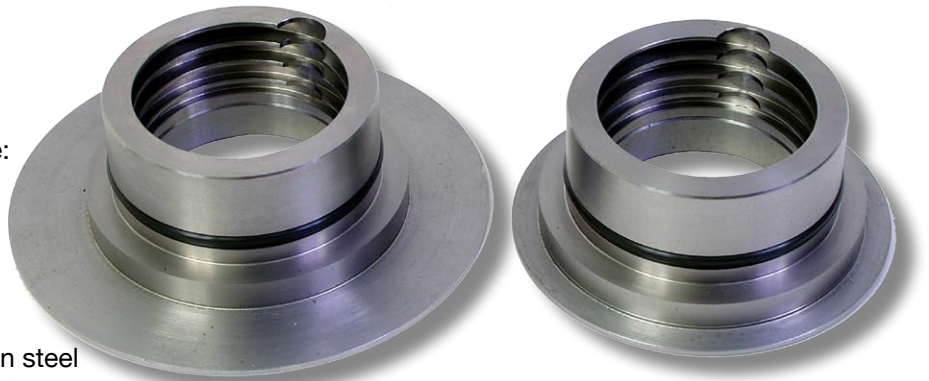
## Features and construction

# ELLIOTT BEARING ISOLATOR (EBI)



## Application data

- Max continuous speed:
  - 6000 RPM
- Maximum steam exhaust temperature:
  - 700 Deg. F/ 370 Deg. C
- Materials of Construction:
  - Stator: AISI 416 stainless steel (brass optional)
  - Rotating Sleeve: ASTM A519 carbon steel
  - O-ring: Viton®



901 North Fourth Street  
 Jeannette, PA 15644-1473  
[info@elliott-turbo.com](mailto:info@elliott-turbo.com)  
[www.elliott-turbo.com](http://www.elliott-turbo.com)